



OWNERS MANUAL AND PARTS BREAKDOWNS



ACE Manufacturing & Distributing, Inc.
P.O. Box 1188 Gadsden, AL 35901
Ph (800) 538-1780, Fax (256) 549-5502
www.BushmasterEquipment.com

Table of Contents

<u>Warranty</u>	<u>03, 04</u>
<u>Safety Instructions</u>	<u>05, 06</u>
<u>Operating Instructions</u>	<u>07</u>
<u>Maintenance</u>	<u>08</u>
<u>Parts breakdown- SL501/ SL601</u>	<u>09-11</u>
<u>Parts breakdown- SL501PB/ SL601PB</u>	<u>12-14</u>
<u>Parts breakdown- MX501-60SL</u>	<u>15, 16</u>
<u>Parts breakdown- MX401-48SL</u>	<u>17, 18</u>
<u>Parts breakdown- MX401-42SL</u>	<u>19, 20</u>
<u>Parts breakdown- MX401-36SL</u>	<u>21, 22</u>
<u>Parts breakdown-TAZ401</u>	<u>23, 24</u>
<u>Parts breakdown- TAZ401-MT</u>	<u>25, 26</u>

LIMITED WARRANTY

FREIGHT TERMS & CLAIMS:

Title to the product and risk of loss transfers from the customer upon shipment from our facility in Gadsden, Alabama. Bushmaster is not responsible for product damage, or loss in transit. Claims for product damage or loss in transit are the responsibility of the buyer and should be filed with the freight carrier immediately.

WARRANTY:

Bushmaster warrants each new product to be free from defects in material and workmanship.

For 90 days from the date of purchase/delivery, when the attachment has been properly maintained and lubricated in accordance with the operating and maintenance instructions in the owner's manual, Bushmaster will repair or replace for free of charge, any defect in material or workmanship in this product.

Geartek manufactures our motor and Auburn Gear manufactures our bearing. These products have a 1-year warranty on them from point of purchase. If there is a problem with either part from those manufacturers, you can send the parts to either company for repair.

This warranty does not cover:

The warranty excludes wear items such as, but not limited to, blades, blade bolts, castle nuts, pins, etc. These items are consumables and will become worn during normal use.

Repairs on the motor, or bearing assemblies because of alteration, accident, operator abuse, or negligence, including the failure to maintain and operate the attachment according to the instructions contained in the owner's manual, or if repairs have been made with parts other than those obtained through Bushmaster Equipment.

Disassembly of motor will void motor warranty.

Our obligation under this warranty shall be limited to repairing and replacing, free of charge to the original purchaser, any part that in our judgment shows evidence of a defect, provided the part is obtained through the dealer and the distributor from whom the purchase was made, transportation charges prepaid.

This warranty shall not be interpreted to render us liable for injury or damages of any kind. This warranty does not extend to any expense or loss incurred for labor, supplies, substitute machine rental, or any other reason.

BUSHMASTER, Inc. reserves the right to make improvements in designs or changes in specifications at any time, without incurring any obligations to owners of units previously sold.

No one is authorized to alter, modify, or enlarge this warranty nor the exclusions, limitations, and reservations.

Safety Instructions

Bushmaster cutters are valuable tools for maintaining pond banks, ditches, fence lines, clearing brush and small trees. However, they pose danger risks if not used properly. This section outlines safety precautions to help with preventing accidents.

Avoidance of Discharged Material Hazards:

- Bushmaster cutters are designed to cut material 3" or less, which will result in the discharge of debris.
- Never operate a Bushmaster cutter in areas where there is a risk of discharging material toward people, animals, or property. Keep bystanders away from the discharge of material, if unavoidable, never cut in the direction of the bystander.
- Never drive with your Bushmaster cutter running raised in the air, or dramatically tilted to block your point of view. Always make sure you can see what you are cutting.
- Before operating any Bushmaster cutter, walk over the intended cutting area and ensure the work area is clear of any obstacles that could be struck and become a projectile such as metal or rocks.
- Replace safety decals if they have become unreadable, worn, or damaged.
- Replace rubber safety guards if worn or damaged.

All personnel who operate or work near Bushmaster cutters must read and understand these safety guidelines. By doing so, they acknowledge their responsibility to adhere to these precautions and contribute to a safe working environment.

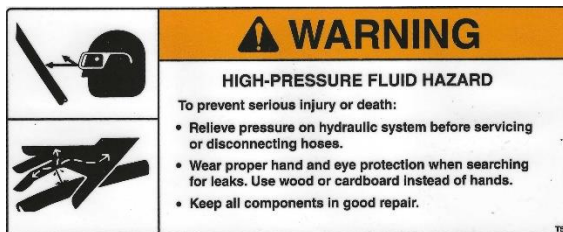
Safety Instructions



- Keep Hands and Feet Away from the cutter while in use.
- Failure to do so, can result in missing extremities.



- Thrown Object Hazard
- Be aware of surroundings, watch for people, animals, and property while cutter is in use.
- Failure to do so, can result in damage, injury, or death.



- High Pressure Fluid Hazard
- Relieve pressure on hydraulic system before servicing unit.
- Replace any leaking or damaged hydraulic hoses or fittings.
- Wear proper eye and hand protection while working on hydraulics.

Operating Instructions

Conduct a walk over inspection of the Bushmaster cutter.

Check for any visible damage, leaks in hydraulics, or loose components.

Securely mount the Bushmaster cutter to your skid steer, or mini excavator.

Double check all locking mechanisms to ensure the Bushmaster cutter is properly locked in place.

Attach hydraulic hoses from the Bushmaster cutter to the fittings on the skid steer or mini excavator.

Make sure the hydraulic hoses are fully connected, Operating a Bushmaster cutter with hoses not coupled correctly, can result in “dead heading” the hydraulic motor, This will result in a leak coming from the weep hole in the front of the motor. This can be rectified with the installation of a seal kit.

Position your machine running your Bushmaster cutter in the area to be cleared.

Use the controls to maneuver the Bushmaster cutter as needed to effectively cut vegetation.

On SL models, material will discharge from the back of the cutter, keep the rear raised 3-4” off the ground for discharging purposes.

MX models will discharge out of side openings.

When cutting brush and larger material, with all Bushmaster models, operate in the following manner. Roll the front of your Bushmaster cutter up 1-2 feet, do not lift the rear of the cutter only the front. Slowly push into the material and roll down the cutter to bend and cut the material to be cut.

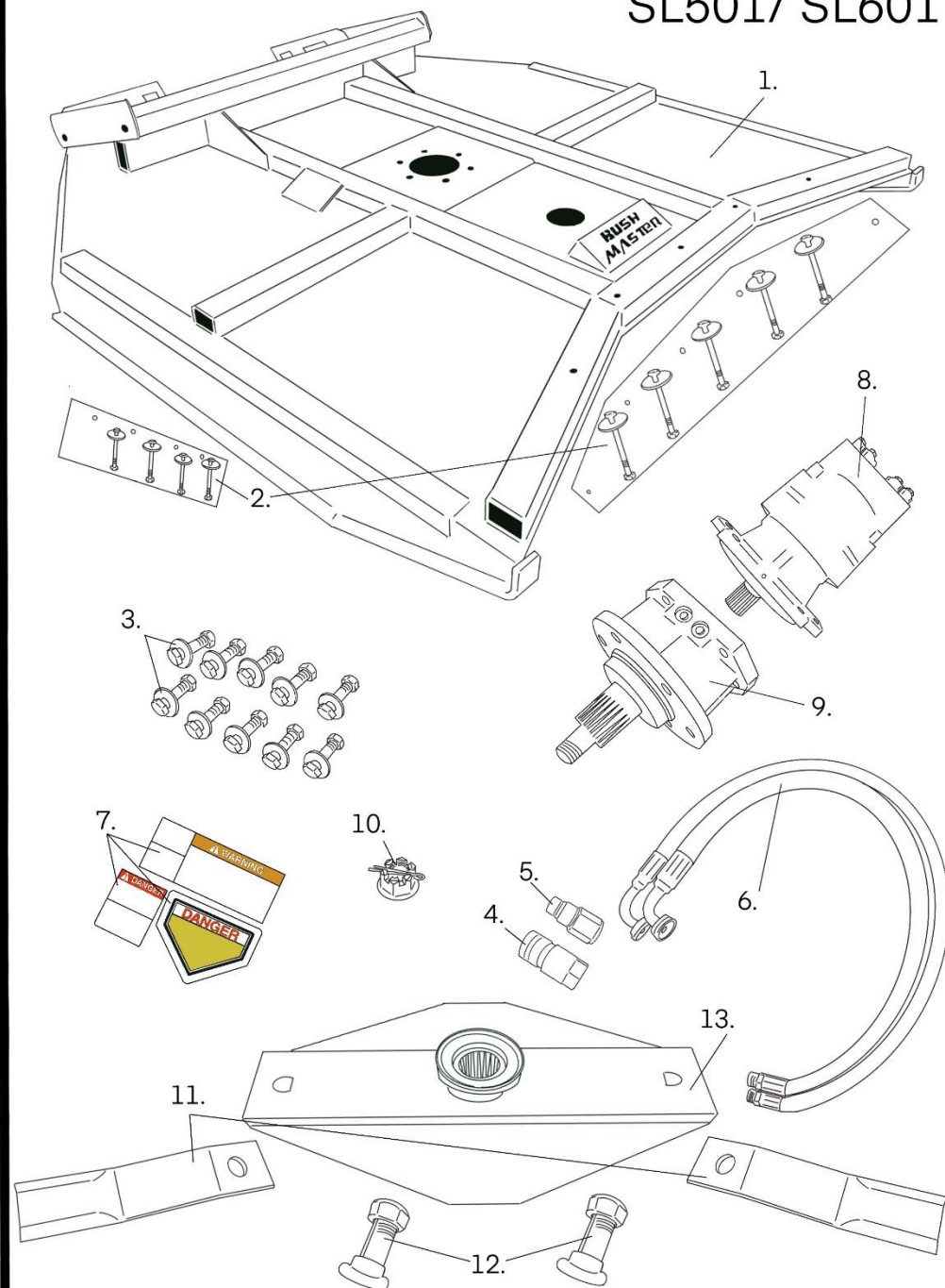
Back drag over cut material/vegetation to help mulch said material/vegetation.

Maintenance

Perform regular maintenance on all Bushmaster cutters to ensure they are in optimal working condition. Inspect blades and other working components for wear and replace as necessary.

- Check gearboxes, overhead load bearing, for proper lube levels. If low, use 80/90w gear oil, fill until above check point.
- Check for loose bolts and nuts. Tighten as necessary.
- Make sure all safety decals are undamaged and legible.
- Check blades for proper sharpness, damage, or excessive wear.
- Check cutter deck for cracks or other damage, fix as needed.
- Check hydraulic motor, and hydraulic lines/ couplers for leaks, replace if necessary.
- Check blade carrier for damage or excessive wear.
- Sharpen blades as required. NEVER sharpen severely worn or damaged blades. Always use a grinder to sharpen blades. Check to ensure proper balance when finished.
- Always replace both blades at the same time to ensure proper balance of blade carrier.
- If a gearbox, overhead load bearing, is leaking from bottom, contact Bushmaster Equipment, or your local dealer for the purchase of a service kit.
- If a motor is leaking from the weep hole, contact Bushmaster Equipment, or your local dealer for the purchase of a seal kit.

SL501/ SL601



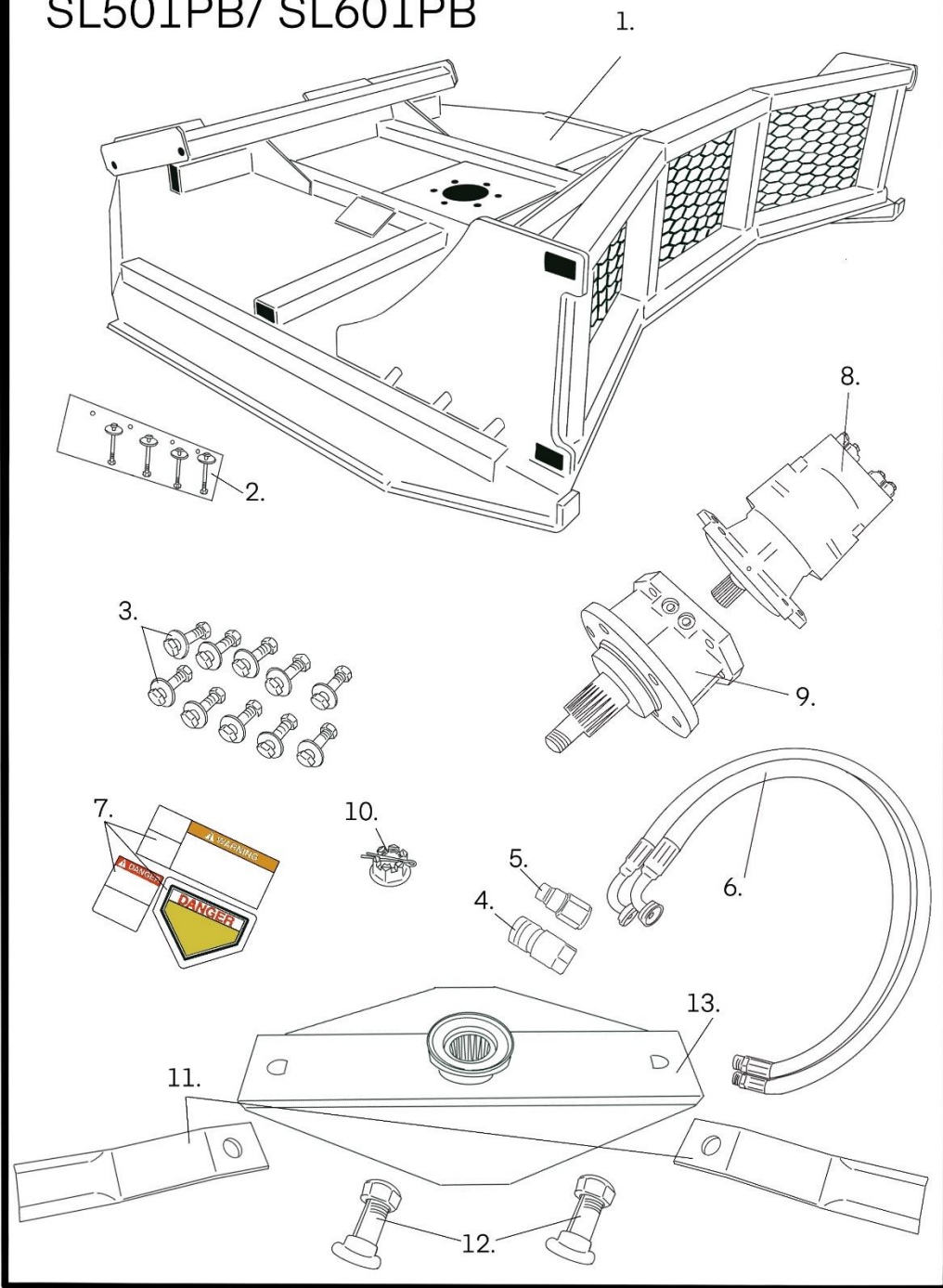
SL501

	Part Number	Description
1	SL501	60" Galvanized Deck
2	SBR-5SL	½"x 6" Side Board Rubber with Hardware
3	M65 Bolt Pack	(6) ¾"x 3 Bolts with Nuts, (2) 5/8" x 2 ½" Bolts with Nuts, (4) ½" x 2 ½" Bolts with Nuts
4	FF 08-12C	½" Female Flat Face Coupler ¾" NPT
5	FF 08-12N	½" Male Flat Face Nipple ¾" NPT
6	HH-SL	Hydraulic Hose Assembly 80"
7	SL-Decal	Decal Set for ALL Models
8	GT8093	Geartek Direct Drive Motor
9	60003676	Auburn Gear Overhead Load Bearing
10	CN-65	Castle Nut with Cotter Pin
11	BL	Blade 19.5"
12	BBN	Blade Bolt & Nut Set
13	DBA-5SL	Devastator Blade Assembly with Hub for 60"
	• BL-BBN	Blade set with (2) BB10 Blade Bolts (2) Stover Nuts (1) Thread Locker
	• GT5536	Seal Kit for Geartek GT8093 Motor
	• 6410133	Seal Kit for Auburn Gear 60003676 Unit

SL601

	Part Number	Description
1	SL601	72" Galvanized Deck
2	SBR-6SL	½"x 6" Side Board Rubber with Hardware
3	M65 Bolt Pack	(6) ¾"x 3 Bolts with Nuts, (2) 5/8" x 2 ½" Bolts with Nuts, (4) ½" x 2 ½" Bolts with Nuts
4	FF 08-12C	½" Female Flat Face Coupler ¾" NPT
5	FF 08-12N	½" Male Flat Face Nipple ¾" NPT
6	HH-SL	Hydraulic Hose Assembly 80"
7	SL-Decal	Decal Set for ALL Models
8	GT8263	Geartek Direct Drive Motor
9	60003676	Auburn Gear Overhead Load Bearing
10	CN-65	Castle Nut with Cotter Pin
11	BL	Blade 19.5"
12	BBN	Blade Bolt & Nut Set
13	DBA-6SL	Devastator Blade Assembly with Hub for 72"
	• BL-BBN	Blade set with (2) BB10 Blade Bolts (2) Stover Nuts (1) Thread Locker
	• GT5536	Seal Kit for Geartek GT8263 Motor
	• 6410133	Seal Kit for Auburn Gear 60003676 Unit

SL501PB/ SL601PB

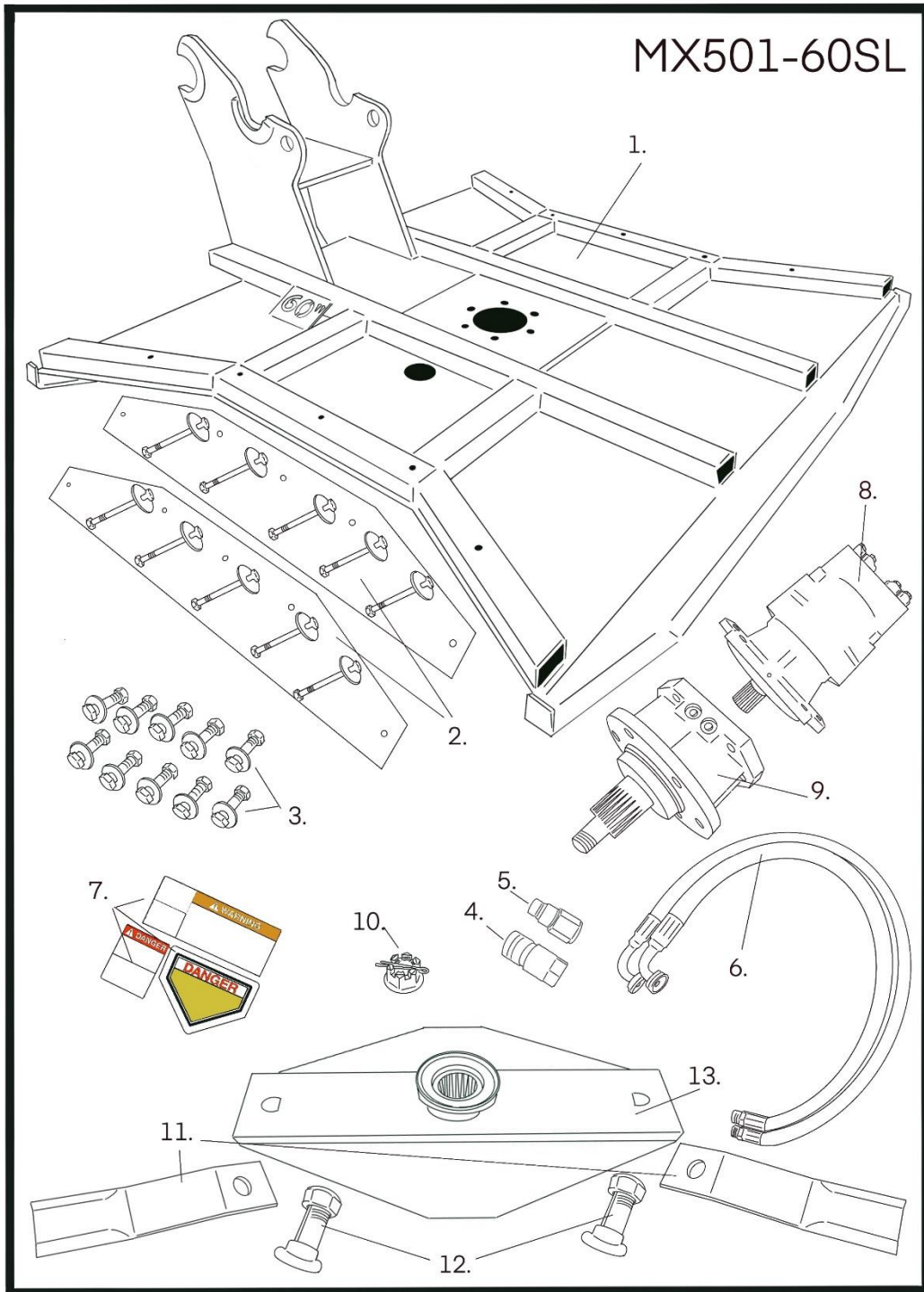


SL501PB

	Part Number	Description
1	SL501PB	60" Galvanized Deck with Push Bar
2	SBR-5SL	½" X 6" Side Board Rubber with Hardware
3	M65 Bolt Pack	(6) ¾"x 3 Bolts with Nuts, (2) 5/8" x 2 ½" Bolts with Nuts, (4) ½" x 2 ½" Bolts with Nuts
4	FF 08-12C	½" Female Flat Face Coupler ¾" NPT
5	FF 08-12N	½" Male Flat Face Nipple ¾" NPT
6	HH-SL	Hydraulic Hose Assembly 80"
7	SL-Decal	Decal Set for ALL Models
8	GT8093	Geartek Direct Drive Motor
9	60003676	Auburn Gear Overhead Load Bearing
10	CN-65	Castle Nut with Cotter Pin
11	BL	Blade 19.5"
12	BBN	Blade Bolt & Nut Set
13	DBA-5SL	Devastator Blade Assembly with Hub for 60"
	• BL-BBN	Blade set with (2) BB10 Blade Bolts (2) Stover Nuts (1) Thread Locker
	• GT5536	Seal Kit for Geartek GT8093 Motor
	• 6410133	Seal Kit for Auburn Gear 60003676 Unit

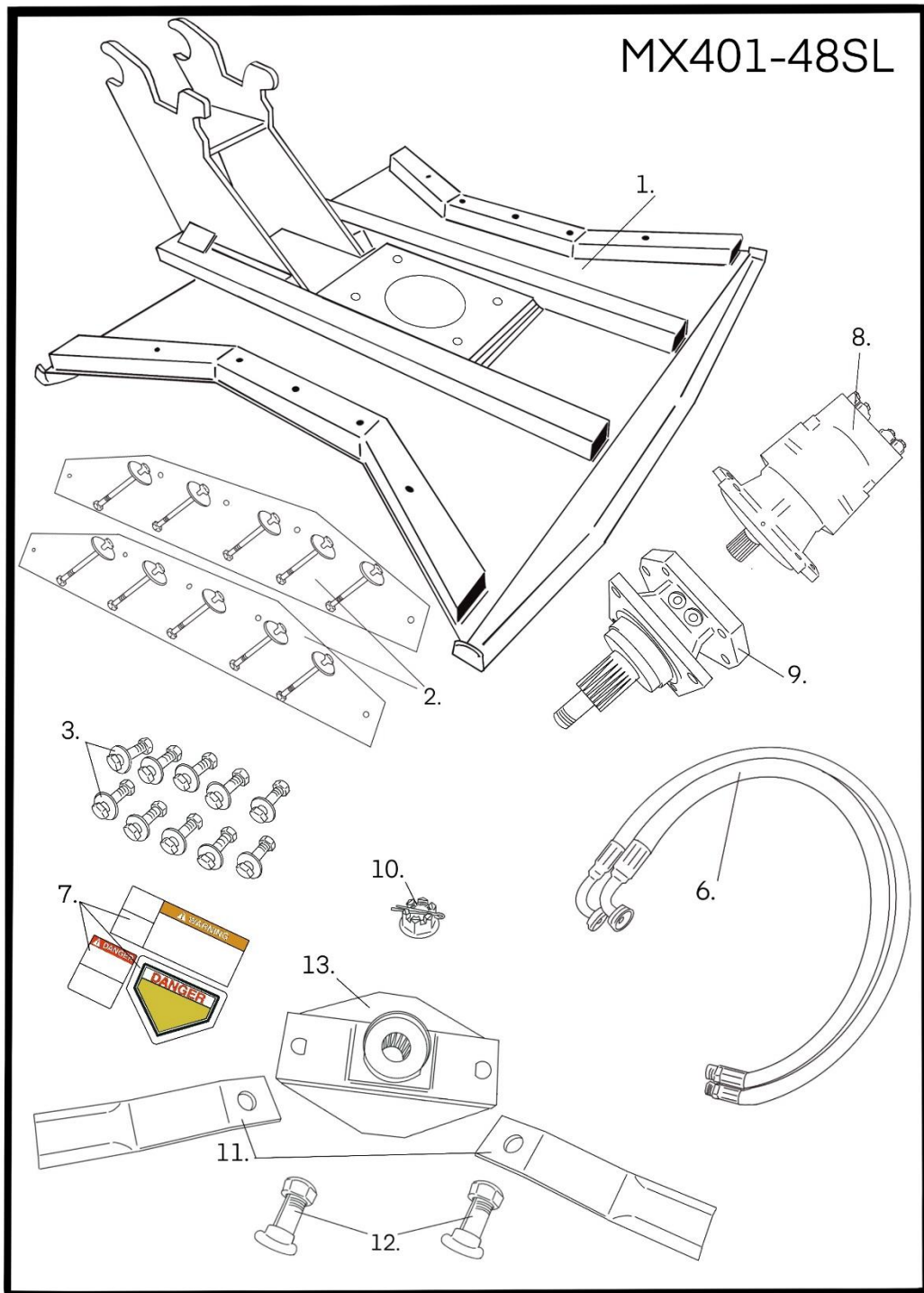
SL601PB

	Part Number	Description
1	SL601	72" Galvanized Deck with Push Bar
2	SBR-6SL	½"x 6" Side Board Rubber with Hardware
3	M65 Bolt Pack	(6) ¾"x 3 Bolts with Nuts, (2) 5/8" x 2 ½" Bolts with Nuts, (4) ½" x 2 ½" Bolts with Nuts
4	FF 08-12C	½" Female Flat Face Coupler ¾" NPT
5	FF 08-12N	½" Male Flat Face Nipple ¾" NPT
6	HH-SL	Hydraulic Hose Assembly 80"
7	SL-Decal	Decal Set for ALL Models
8	GT8263	Geartek Direct Drive Motor
9	60003676	Auburn Gear Overhead Load Bearing
10	CN-65	Castle Nut with Cotter Pin
11	BL	Blade 19.5"
12	BBN	Blade Bolt & Nut Set
13	DBA-6SL	Devastator Blade Assembly with Hub for 72"
	• BL-BBN	Blade set with (2) BB10 Blade Bolts (2) Stover Nuts (1) Thread Locker
	• GT5536	Seal Kit for Geartek GT8263 Motor
	• 6410133	Seal Kit for Auburn Gear 60003676 Unit



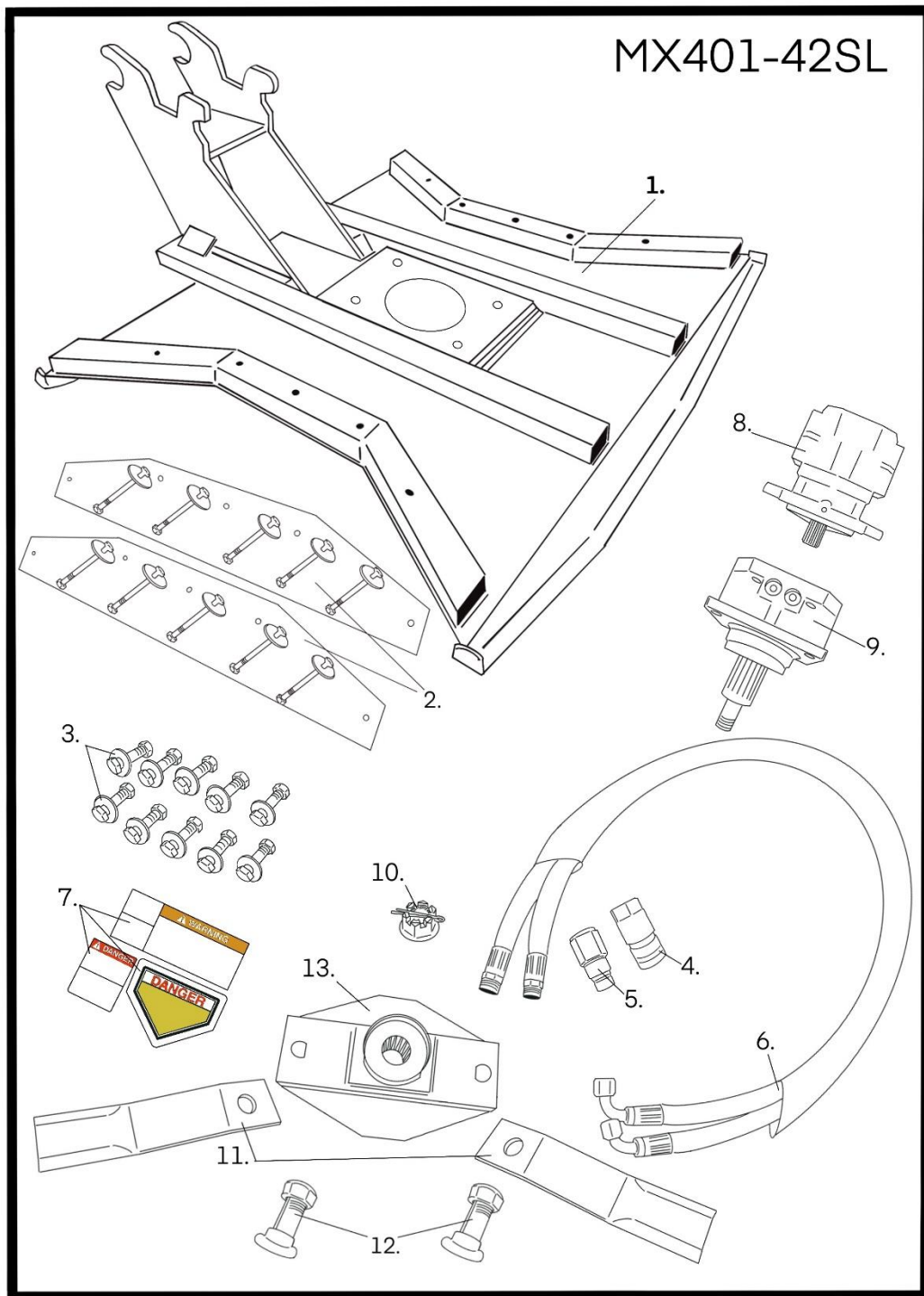
MX501-60SL

	Part Number	Description
1	MX501	60" Galvanized Deck
2	SBR-MX60	½"x 6" Side Board Rubber with Hardware
3	M65 Bolt Pack	(6) ¾"x 3 Bolts with Nuts, (2) ⅝" x 2 ½" Bolts with Nuts, (4) ½" x 2 ½" Bolts with Nuts
4	FF 08-12C	½" Female Flat Face Coupler ¾" NPT
5	FF 08-12N	½" Male Flat Face Nipple ¾" NPT
6	HH-SL-120	Hydraulic Hose Assembly 120"
7	SL-Decal	Decal Set for ALL Models
8	GT8093	Geartek Direct Drive Motor
9	60003676	Auburn Gear Overhead Load Bearing
10	CN-65	Castle Nut with Cotter Pin
11	BL	Blade 19.5"
12	BBN	Blade Bolt & Nut Set
13	DBA-5SL	Devastator Blade Assembly with Hub for 60"
	• BL-BBN	Blade set with (2) BB10 Blade Bolts (2) Stover Nuts and (1) Thread Locker
	• GT5536	Seal Kit for Geartek GT8093 Motor
	• 6410133	Seal Kit for Auburn Gear 60003676 Unit



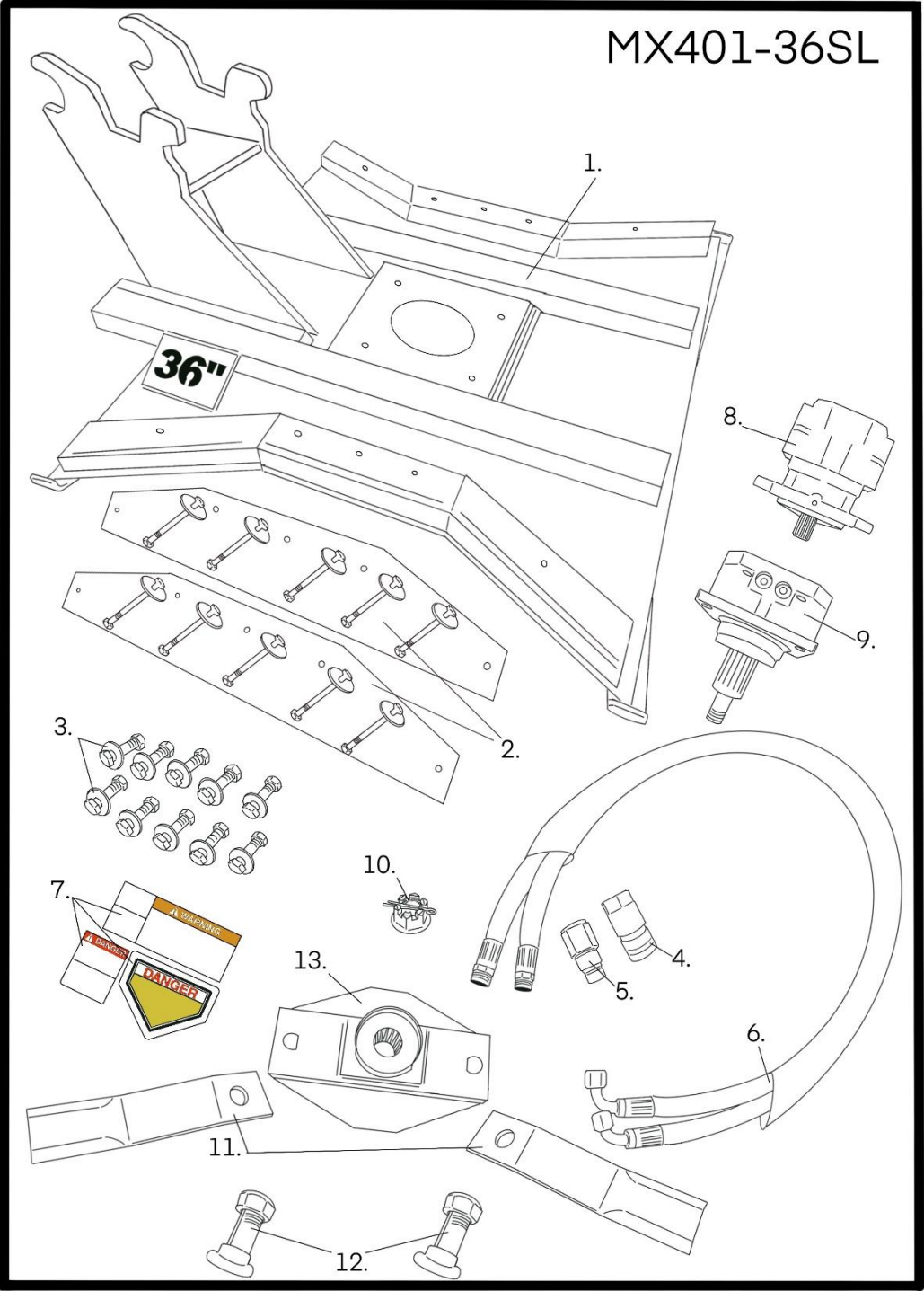
MX401-48SL

	Part Number	Description
1	MX401-48	48" Galvanized Deck
2	SBR-MX48	½"x 6" Side Board Rubber with Hardware
3	M40 Bolt Pack	(6) ¾"x 3 Bolts with Nuts, (2) 5/8" x 2 ½" Bolts with Nuts, (4) ½" x 2 ½" Bolts with Nuts
4	FF 08-12C	½" Female Flat Face Coupler ¾" NPT
5	FF 08-12N	½" Male Flat Face Nipple ¾" NPT
6	HH-SL-120	Hydraulic Hose Assembly 120"
7	SL-Decal	Decal Set for ALL Models
8	GT8093	Geartek Direct Drive Motor
9	60003675	Auburn Gear Overhead Load Bearing
10	CN	Castle Nut with Cotter Pin
11	BL	Blade 19.5"
12	BBN	Blade Bolt & Nut Set
13	BC-4	Devastator Blade Assembly with Hub for 48" & 42"
	• BL-BBN	Blade set with (2) BB10 Blade Bolts (2) Stover Nuts and (1) Thread Locker
	• GT5536	Seal Kit for Geartek GT8093 Motor
	• 6410132	Seal Kit for Auburn Gear 60003675 Unit



MX401-42SL

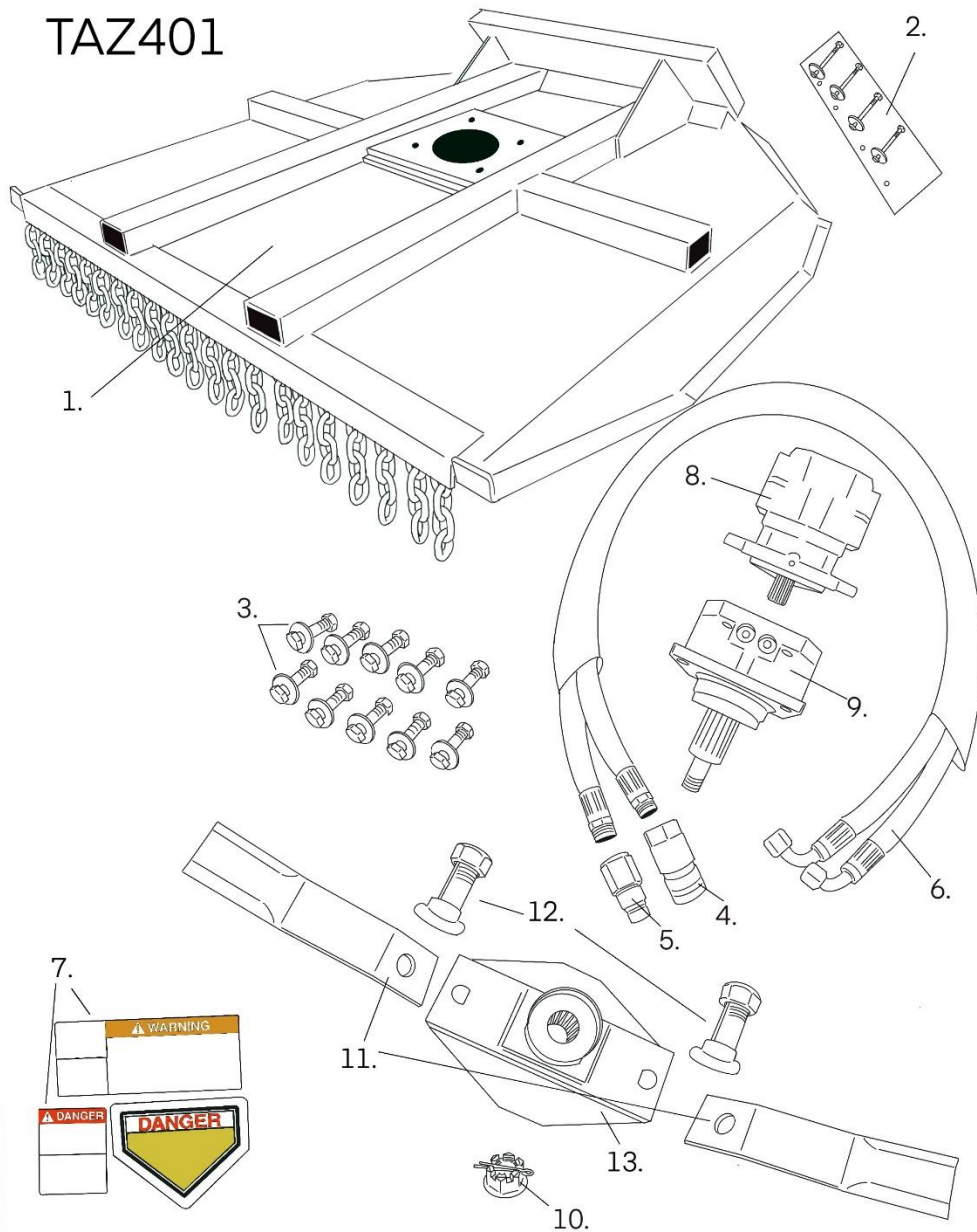
	Part Number	Description
1	MX401-42	48" Galvanized Deck
2	SBR-MX42	½"x 6" Side Board Rubber with Hardware
3	M40 Bolt Pack	(6) ¾"x 3 Bolts with Nuts, (2) 5/8" x 2 ½" Bolts with Nuts, (4) ½" x 2 ½" Bolts with Nuts
4	FF 08-12C	½" Female Flat Face Coupler ¾" NPT
5	FF 08-12N	½" Male Flat Face Nipple ¾" NPT
6	HH-TAZ-120	Hydraulic Hose Assembly 120"
7	SL-Decal	Decal Set for ALL Models
8	GT10945	Geartek Direct Drive Motor
9	60003674	Auburn Gear Overhead Load Bearing
10	CN	Castle Nut with Cotter Pin
11	BL-TAZ	Blade 17.5"
12	BBN	Blade Bolt & Nut Set
13	BC-4	Devastator Blade Assembly with Hub for 48" & 42"
	• BL-BBN-TAZ	Blade set with (2) BB10 Blade Bolts (2) Stover Nuts (1) Thread Locker
	• 722763	Seal Kit for Geartek GT10945 Motor
	• 6410132	Seal Kit for Auburn Gear 60003674 Unit



MX401-36SL

	Part Number	Description
1	MX401-36	36" Galvanized Deck
2	SBR-MX36	½"x 6" Side Board Rubber with Hardware
3	M40 Bolt Pack	(6) ¾"x 3 Bolts with Nuts, (2) 5/8" x 2 ½" Bolts with Nuts, (4) ½" x 2 ½" Bolts with Nuts
4	FF 08-12C	½" Female Flat Face Coupler ¾" NPT
5	FF 08-12N	½" Male Flat Face Nipple ¾" NPT
6	HH-TAZ-120	Hydraulic Hose Assembly 120"
7	SL-Decal	Decal Set for ALL Models
8	GT10945	Geartek Direct Drive Motor
9	60003674	Auburn Gear Overhead Load Bearing
10	CN	Castle Nut with Cotter Pin
11	BL-36	Blade 15"
12	BBN	Blade Bolt & Nut Set
13	BC-36	Devastator Blade Assembly with Hub for 36"
	• BL-BBN-36	Blade set with (2) BB10 Blade Bolts (2) Stover Nuts (1) Thread Locker
	• 722763	Seal Kit for Geartek GT10945 Motor
	• 6410132	Seal Kit for Auburn Gear 60003674 Unit

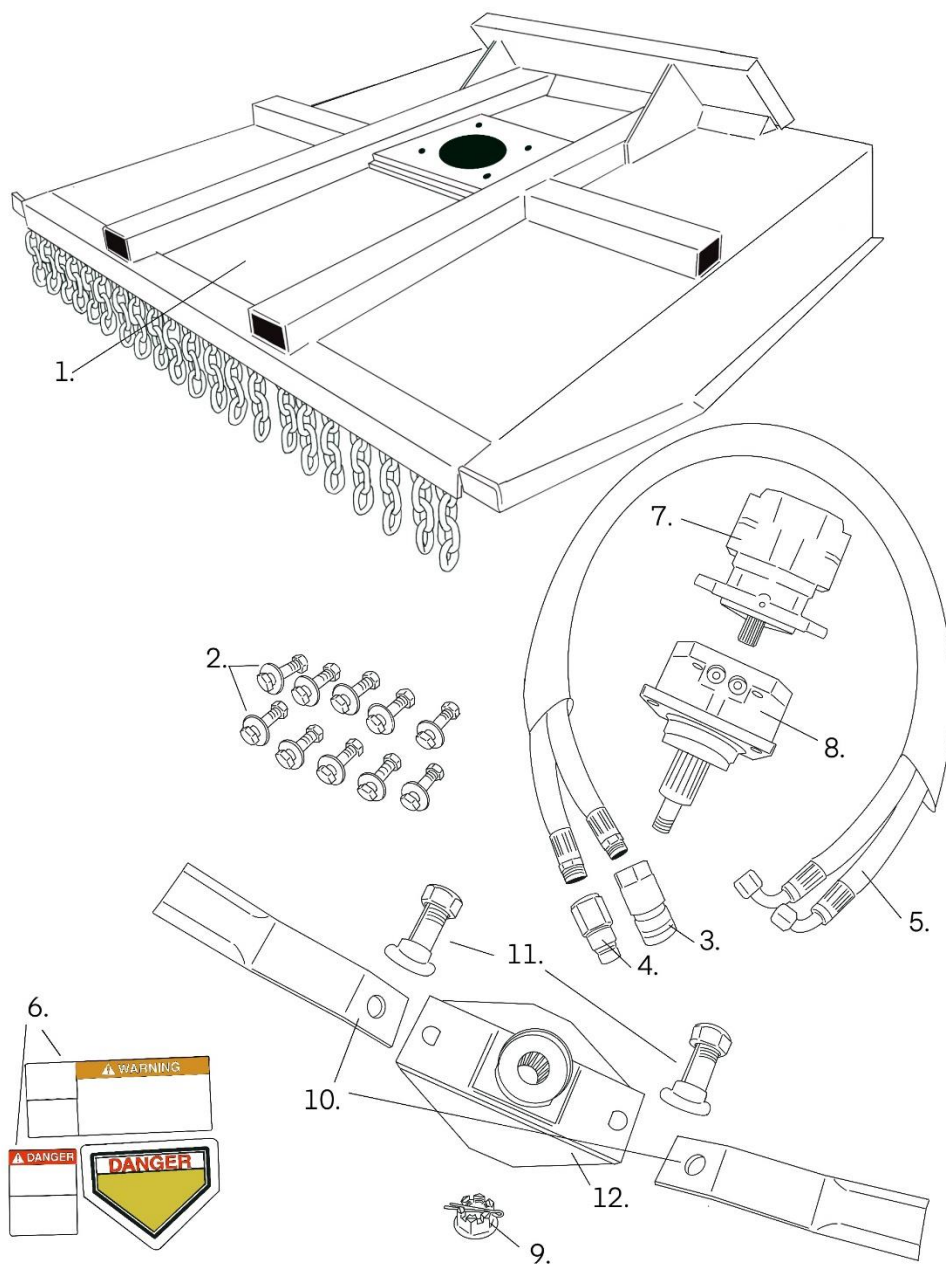
TAZ401



TAZ401

	Part Number	Description
1	TAZ401	42" Galvanized Deck with Dingo/Boxer coupler
2	SBR-TAZ	½"x 6" Side Board Rubber with Hardware
3	M40 Bolt Pack	(6) ¾"x 3 Bolts with Nuts, (2) 5/8" x 2 ½" Bolts with Nuts, (4) ½" x 2 ½" Bolts with Nuts
4	FF 08-12C	½" Female Flat Face Coupler ¾" NPT
5	FF 08-12N	½" Male Flat Face Nipple ¾" NPT
6	HH-TAZ-80	Hydraulic Hose Assembly 80"
7	SL-Decal	Decal Set for ALL Models
8	GT10945	Geartek Direct Drive Motor
9	60003674	Auburn Gear Overhead Load Bearing
10	CN	Castle Nut with Cotter Pin
11	BL-TAZ	Blade 17.5"
12	BBN	Blade Bolt & Nut Set
13	BC-4	Devastator Blade Assembly with Hub for 48" & 42"
	• BL-BBN-TAZ	Blade set with (2) BB10 Blade Bolts (2) Stover Nuts (1) Thread Locker
	• 722763	Seal Kit for Geartek GT10945 Motor
	• 6410132	Seal Kit for Auburn Gear 60003674 Unit

TAZ401-MT



TAZ401-MT

	Part Number	Description
1	TAZ401	42" Galvanized Deck with Bobcat MT coupler
2	M40 Bolt Pack	(6) $\frac{3}{4}$ " x 3 Bolts with Nuts, (2) $\frac{5}{8}$ " x 2 $\frac{1}{2}$ " Bolts with Nuts, (4) $\frac{1}{2}$ " x 2 $\frac{1}{2}$ " Bolts with Nuts
3	FF 08-12C	$\frac{1}{2}$ " Female Flat Face Coupler $\frac{3}{4}$ " NPT
4	FF 08-12N	$\frac{1}{2}$ " Male Flat Face Nipple $\frac{3}{4}$ " NPT
5	HH-TAZ-80	Hydraulic Hose Assembly 80 "
6	SL-Decal	Decal Set for ALL Models
7	GT10945	Geartek Direct Drive Motor
8	60003674	Auburn Gear Overhead Load Bearing
9	CN	Castle Nut with Cotter Pin
10	BL-TAZ	Blade 17.5"
11	BBN	Blade Bolt & Nut Set
12	BC-4	Devastator Blade Assembly with Hub for 48" & 42"
	• BL-BBN-TAZ	Blade set with (2) BB10 Blade Bolts (2) Stover Nuts (1) Thread Locker
	• 722763	Seal Kit for Geartek GT10945 Motor
	• 6410132	Seal Kit for Auburn Gear 60003674 Unit